

Section 3.4

WILDLIFE CROSSING CORRIDOR RECOMMENDATIONS

Many of the wildlife crossing projects that DCHC MPO has identified and is recommending as part of this plan align with corridors of wildlife travel. Identifying and implementing wildlife crossing projects within corridors can help create both a connected network for wildlife travel by ensuring there are no gaps, and enhance roadway safety for drivers due to wildlife being guided along the natural corridor, and off the road. Additionally, presenting a slate of wildlife crossing projects within a corridor could be a priority for funding agencies who seek to enhance and make a connected safety network.

DCHC MPO has identified two corridors as part of this plan:

- The Eno River Corridor
- The New Hope Creek Corridor



US 15-501 bridge over New Hope Creek in Durham County. DCHC MPO.

Eno River Corridor

The DCHC MPO has identified eleven (11) project recommendations and sites as part of the Eno River Corridor within this plan. The projects span both Durham and Orange counties. A complete list of projects along this corridor is described in Table 3.4.1, and a map showing these projects is shown in Figure 3.4.1.

| Project ID | Project / Crossing Name | County |
|------------|--|--------|
| DurhamCo1 | Cole Mill Road over Eno River | Durham |
| DurhamCo2 | Rivermont Road over Nancy Rhodes Creek | Durham |
| DurhamCo3 | US 501 (Roxboro Road) over Eno River | Durham |
| DurhamCo4 | Guess Road over Eno River | Durham |
| DurhamCo5 | Old Oxford Road over Eno River | Durham |
| OrangeCo1 | Pleasant Green Road over Eno River | Orange |
| OrangeCo2 | US 70 over Stony Creek | Orange |
| OrangeCo3 | I-85 over Stony Creek | Orange |
| OrangeCo4 | University Station Road over Stony Creek | Orange |
| OrangeCo5 | Old NC Highway 10 over Stony Creek | Orange |
| OrangeCo6 | Halls Mill Road over Eno River | Orange |

Table 3.4.1: Complete list of wildlife crossing project recommendations in the Eno River Corridor.

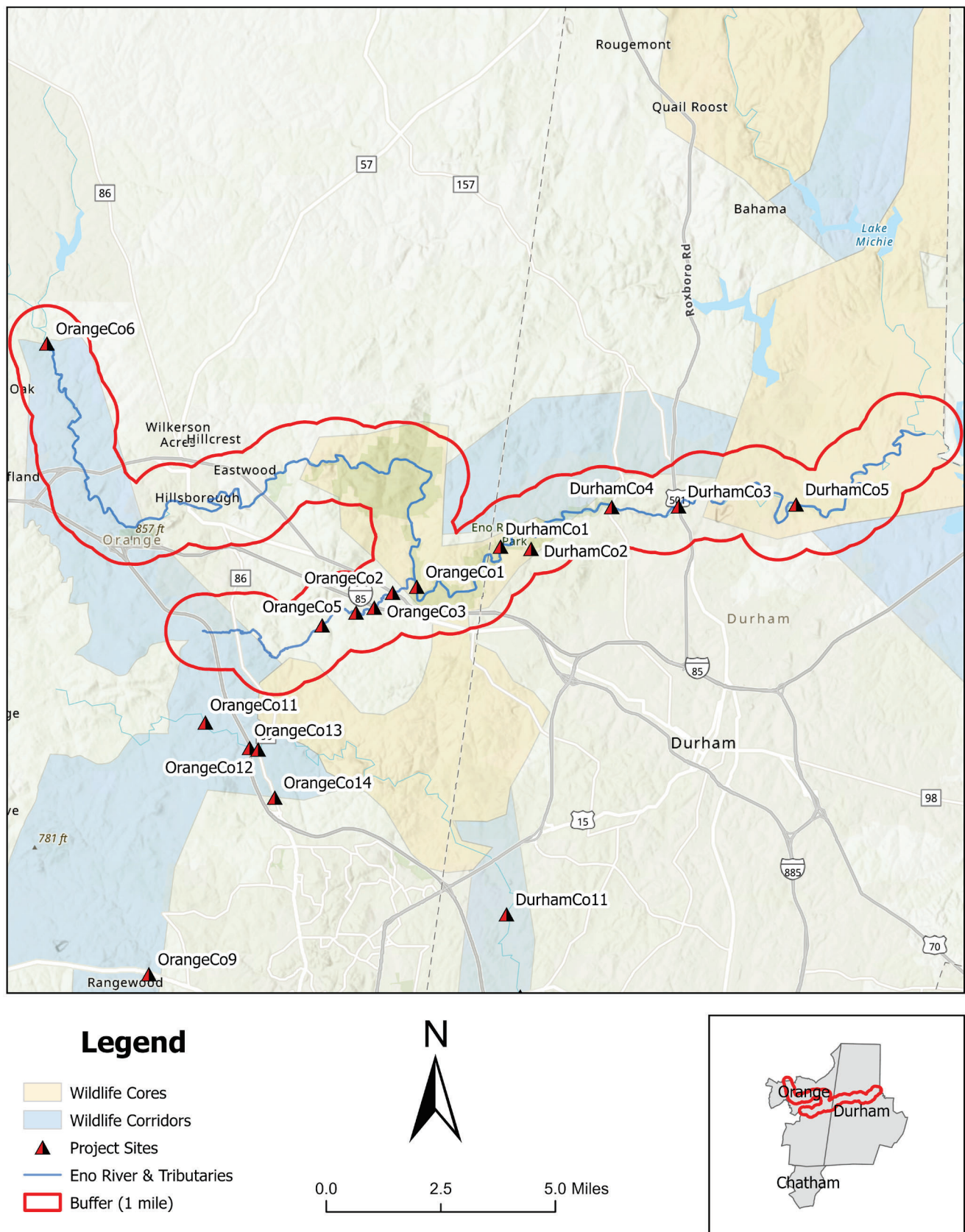


Figure 3.4.1: Map of complete list of wildlife crossing project recommendations in the Eno River Corridor.

New Hope Creek Corridor

The DCHC MPO has identified eight (8) project recommendations and sites as part of the New Hope Creek Corridor within this plan. The projects span both Durham and Orange counties. A complete list of projects along this corridor is described in Table 3.4.2, and a map showing these projects is shown in Figure 3.4.2. Projects that have two Project IDs indicate two separate structures at this site.

| Project ID | Project / Crossing Name | County |
|------------------------|--|--------|
| DurhamCo6 DurhamCo7 | NC 54 over New Hope Creek | Durham |
| DurhamCo8 DurhamCo9 | I-40 Bridge over New Hope Creek | Durham |
| DurhamCo10 | Stagecoach Road over New Hope Creek | Durham |
| DurhamCo11 | Old Chapel Hill Road over New Hope Creek | Durham |
| DurhamCo12 | Farrington Road over Little Creek | Durham |
| OrangeCo11 | New Hope Church Road over New Hope Creek | Orange |
| OrangeCo12 | NC 86 over New Hope Creek | Orange |
| OrangeCo13 | I-40 Culvert over New Hope Creek | Orange |

Table 3.4.2: Complete list of wildlife crossing project recommendations in the New Hope Creek Corridor.

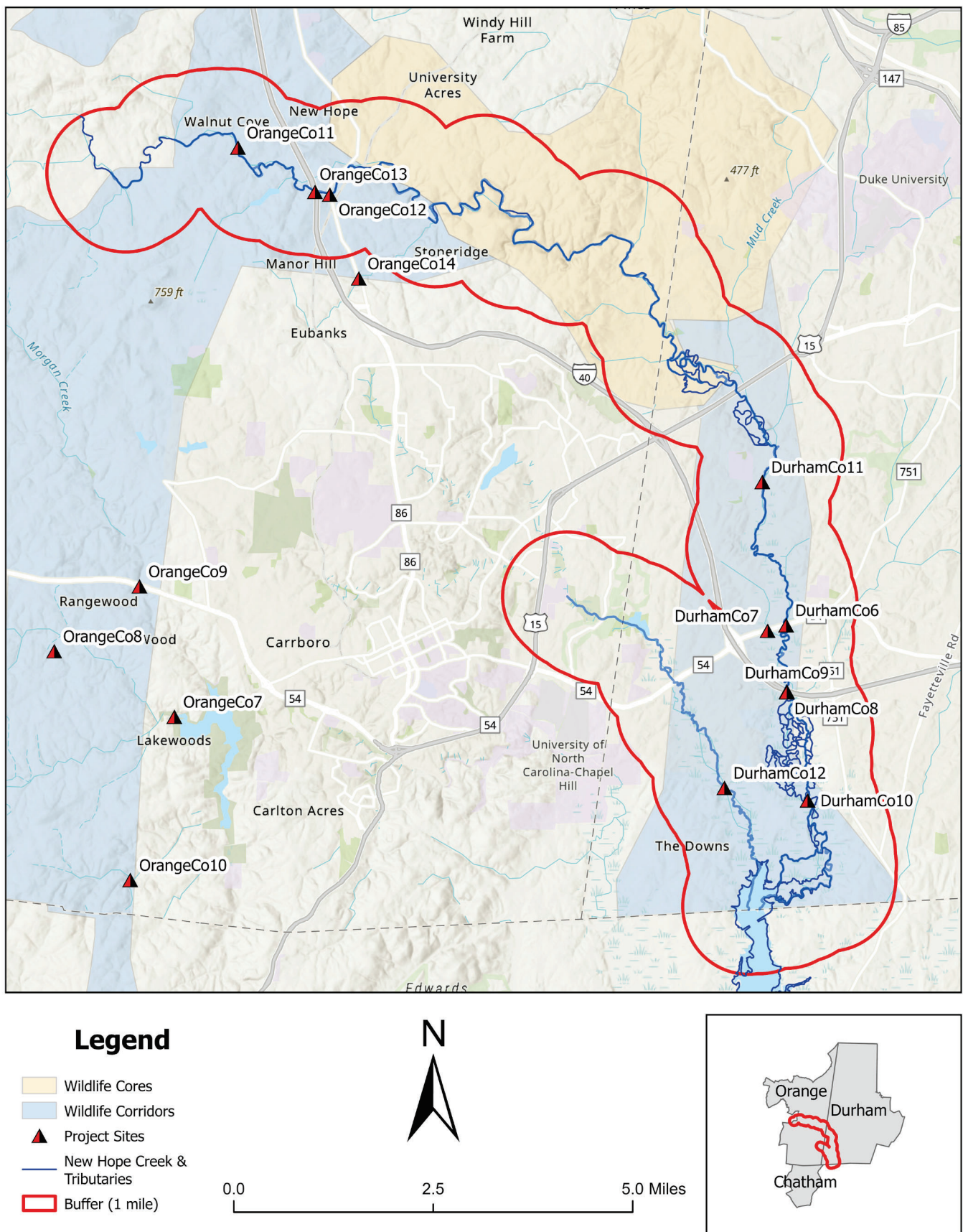


Figure 3.4.2: Map of complete list of wildlife crossing project recommendations in the New Hope Creek Corridor.